

Oxygen-Scentinel

INSTALLATION INSTRUCTIONS - STANDARD DISPENSER

DISPENSER INSTALLATION GUIDELINE



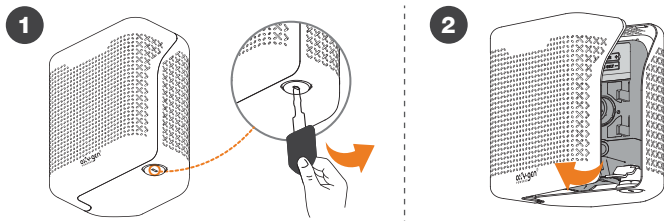
- > Dispenser can be mounted at any height
- > Recommended height 1.5 m / 4.5 ft from the ground
- > One dispenser covers an area of up to 6000 cu. ft.
- > Use only AA Alkaline batteries

For professional use.

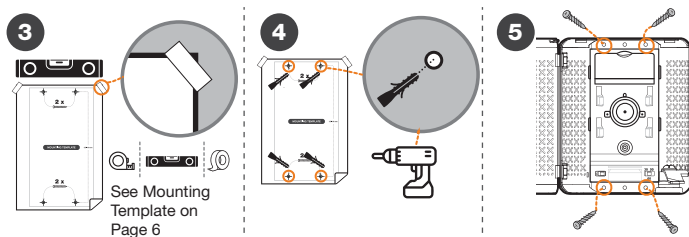
Scan QR code to watch the cartridge installation video
<https://bit.ly/3TcmRKe>



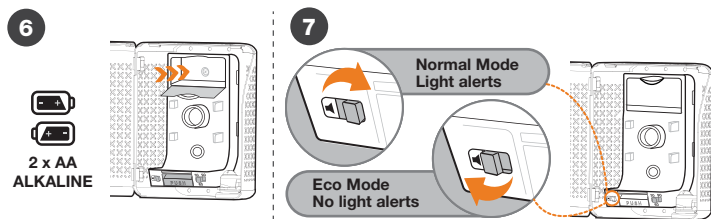
OPENING THE OXYGEN-SUPREME DISPENSER



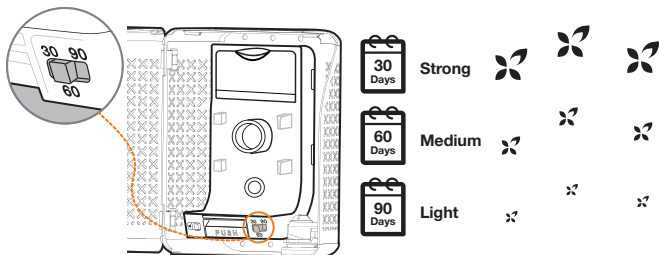
WALL MOUNTING THE DISPENSER



SETTING UP THE DISPENSER



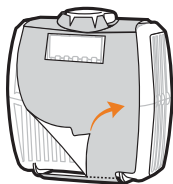
8



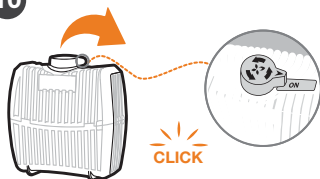
Select the required 30/60/90 days setting.

INSTALLING THE CARTRIDGE

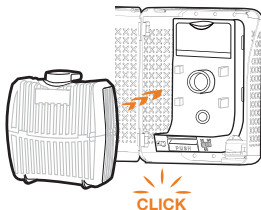
9



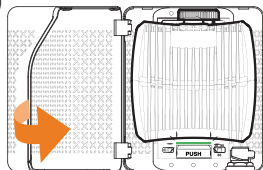
10



11



12

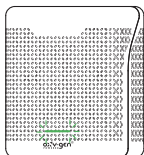


DISPENSER ALERT SETTINGS

Use the Normal-Eco Mode switch to change the dispenser from Normal Mode to Eco Mode. A dispenser operating in the Eco Mode offers considerable battery savings by disabling the light and buzzer alerts during the cartridge cycle.

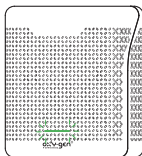
GREEN LIGHT- SUCCESSFUL INSTALLATION

NORMAL MODE

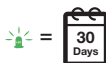


Green light flashing for the first 2 minutes after cartridge installation indicates proper installation. After initial 2 mins it will flash every 5 mins

ECO MODE



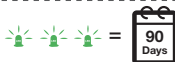
1 flashing light indicates a 1 month (30 days) setting.



2 flashing lights indicate a 2 month (60 days) setting.

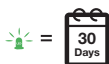
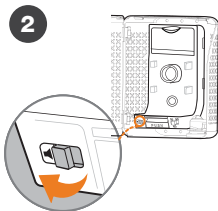
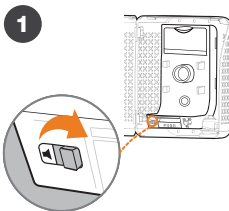


3 flashing lights indicate a 3 month (90 days) setting.



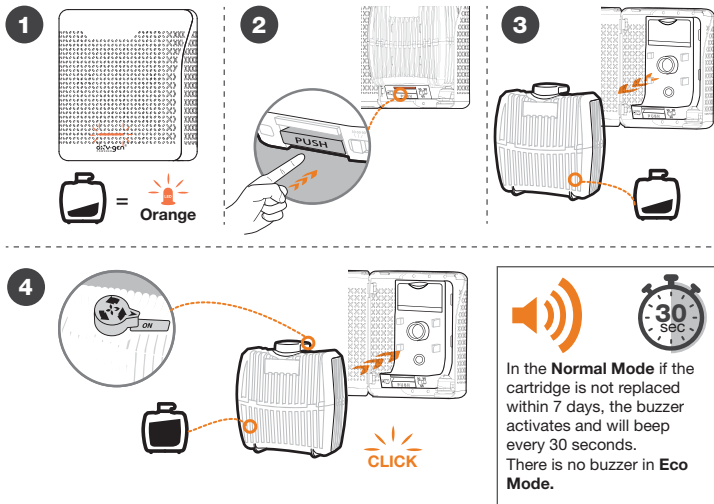
Green light flashing for the first 2 minutes after cartridge installation indicates proper installation. There will be no lights after initial installation till a cartridge or battery change is required.

To check if the dispenser is functioning properly, the Normal-Eco Mode Switch can be toggled by moving the switch to Normal Mode and then bringing it back to the Eco Mode position.



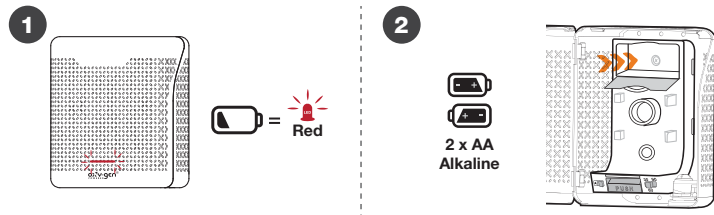
ORANGE LIGHT- REPLACE CARTRIDGE

Orange light flashing indicates that the cartridge is empty. Replace immediately.



RED LIGHT-REPLACE BATTERIES

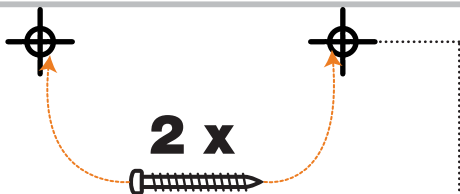
Red light flashing indicates that the batteries need to be replaced.



The paper for this Installation Instructions Manual is:

- Made of 100% recycled fibre
- Manufactured respecting the most demanding environmental certification.
- Manufactured with low energy consumption, water and CO2 emissions compared to the manufacture of virgin fibre papers.





MOUNTING TEMPLATE

137.10 mm

